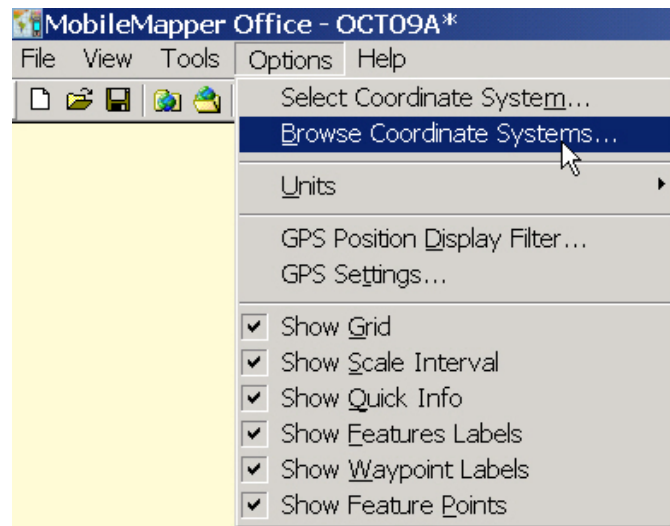


Importing/Exporting ESRI PRJ Files with MobileMapper Office

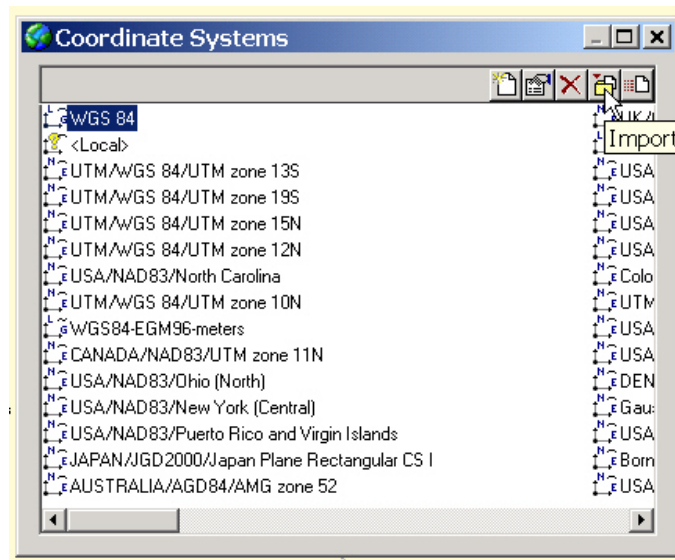
9 November 2006

To ensure that a job exported from MobileMapper Office will be imported seamlessly into your ArcGIS software application (ArcView, ArcMap, ArcPad, etc.), you should export the MobileMapper job using the same .prj definitions used by your GIS. To do this, please follow these simple steps:

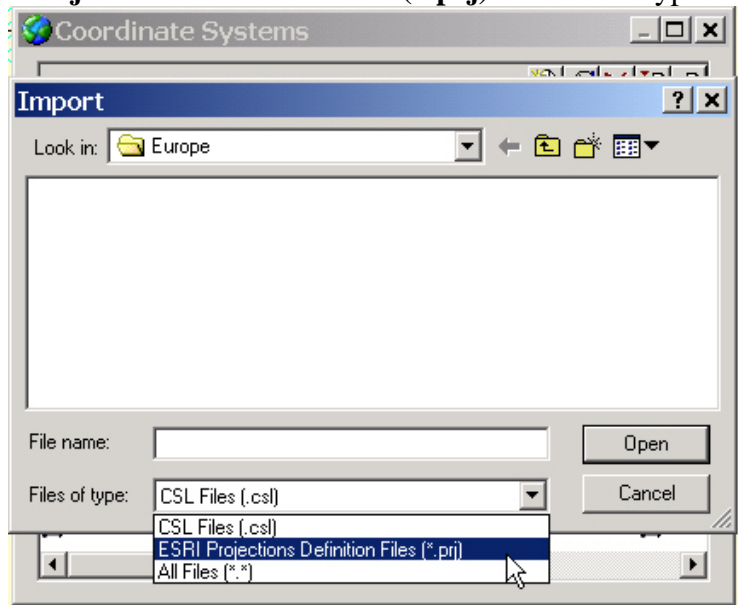
1. Click the **Options** tab in MobileMapper Office and select the **Browse Coordinate System** option.



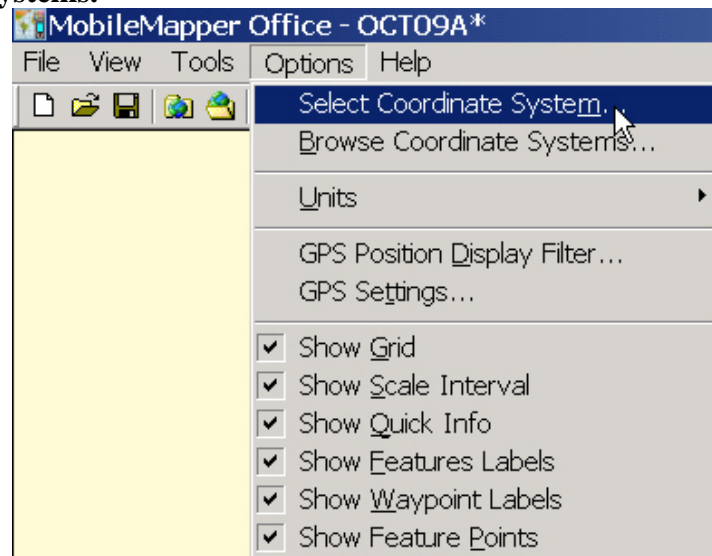
2. Click the **Import** icon.



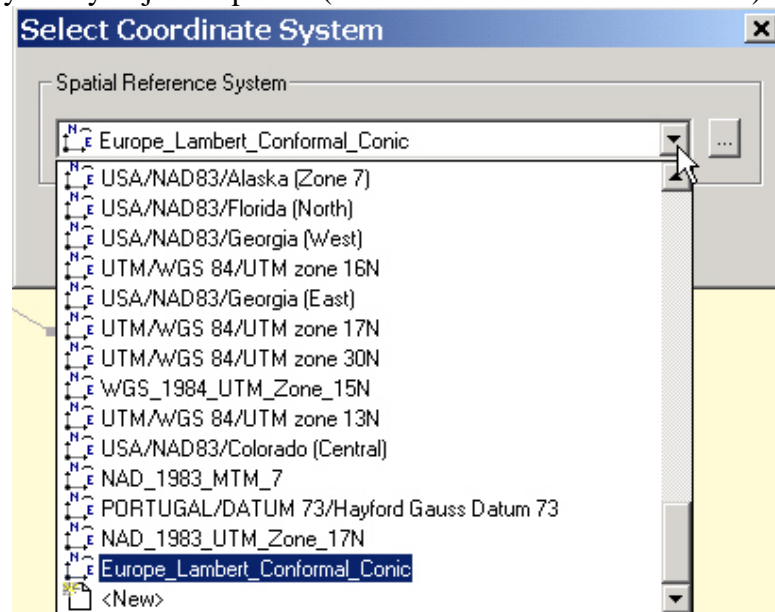
3. Select **ESRI Projections Definition Files (*.prj)** in Files of Type.



4. Then browse to a directory on your PC containing the prj files used by your ESRI software, e.g.: C:\Program Files\ArcPad \Coordinate Systems.
5. Select the desired coordinate system's prj and click **Open**.
6. Exit the **Browse Coordinate Systems** dialog box and click **Options>Select Coordinate Systems**.



7. Click the down arrow to the right of the spatial reference system field and select the coordinate system you just imported (it will be at the bottom of the list).



8. Now click the **OK** button.
9. When you are done processing your job in MobileMapper Office, export the job to shapefile format. When you import this shapefile into your ESRI project, the same coordinate system definition will be used and the import should proceed without any problems.